

SCRIA
ANNUAL REPORT
2023 - 2024



विषय सूची Contents

SCRIA के बारे में About SCRIA

हमारी पहलें
Our Initiatives

प्रभाव Impact

स्वयंसेवी Volunteers

स्थानीय पहल Local Initiatives

परिवर्तन दूत Change Makers

Publications
Supportive services

वित्तीय जानकारी Financial Report

संस्थान The Organization

रिपोर्ट का प्रकाशन **Published by**
SCRIA, Khorī 123101,
District Rewari, Haryana
अगस्त 2024 August 2024

ज़िम्मेदारी सुन्दर लाल – कार्यकारी निदेशक
Responsible
Sunder Lal - Executive Director

रिपोर्ट लेखन व प्रारूप सेनू
Report written & designed by Senoo



SCRIA के बारे में About SCRIA

हमारी दृष्टि स्थानीय समुदाय द्वारा सत्त ग्रामीण विकास

Our Vision Sustainable development in rural areas by local communities

हमारा लक्ष्य विकास व शासन की प्रक्रियाओं में स्थानीय समुदाय की अर्थपूर्ण भागीदारी के लिये उनकी क्षमताओं का विकास करना

Our Mission Building capacities of local communities for meaningful participation in governance & development processes

पहुंच का क्षेत्र 1410 गांव जो दक्षिण हरियाणा के रेवाड़ी, महेन्द्रगढ़, झज्जर, चरखी दादरी जिलों और उत्तर राजस्थान के चुरु जिलों में हैं

Outreach Area 1410 villages in the districts of Rewari, Mahendergarh, Jhajjar, Charkhi Dadri in south Haryana and Churu in north Rajasthan

पहुंच के जन सामाजिक व आर्थिक रूप से पिछड़े समुदाय, ग्राम सभा सदस्य, पंचायती राज संस्थाओं के प्रतिनिधि – खासतौर पर महिलाएँ व नागरिक

Outreach People Economically & socially disadvantaged communities, members of Gram Sabha, representatives of Panchayati Raj Institutions - specially women, like minded civil society organizations and citizens'

केन्द्र बिन्दु समुदाय के साथ कार्य करने पर जिससे वह प्रगति में सहयोगी हों। महिलाएँ, पुरुष, किशोर व युवा पहलों में भागीदार होते हैं जिससे प्रभाव लम्बे समय रहता है, लागत में हिस्सेदारी होती है, स्थानीय पहलें होती हैं और ग्राम स्तर पर प्रबन्धन क्षमताओं में बढ़ोतरी

Focus It's on working with communities for a meaningful relationship as partners in progress. Women, men, teens & youth are involved in programs that leads to community ownership, cost sharing, self-reliance, grass root initiative and enhanced village level organizational capacities.



हमारी पहलें Our Initiatives

पहुंच के कार्यक्षेत्र के नागरिकों की ज़िन्दगी में गुणात्मक व संख्यात्मक सुधार के लिये SCRIA नागरिकों को एक मूक ग्रहणकर्ता की जगह शासन व विकास की प्रक्रियाओं में पहल कर प्रबन्धक बनाने के लिये प्रयासरत है। इसके लिये SCRIA महिलाओं, पुरुषों, किशोर व युवाओं की क्षमताओं का विकास करती है जिससे वह अपनी समस्याओं को पहचानें व सुस्पष्ट करें, उसके निपटान का हल खोजें और स्थानीय पहलों के लिये संसाधन जुटाएँ। कार्यक्रमों के लागत में समुदाय की हिस्सेदारी और सामाजिक अंकेक्षण व सहभागी प्रभाव आंकलन के द्वारा संस्थान अपने कार्यकलापों में अधिक पारदर्शिता, निरंतरता व समुदायिक वचनबद्धता सुनिश्चित करती है। इसके अतिरिक्त समुदाय से स्वेच्छक स्वयंसेवी निरंतर कार्यक्रमों में महत्वपूर्ण भूमिका निभाते हैं। राष्ट्रीय प्रयासों व क्षेत्र की समस्याओं के मद्देनज़र SCRIA की मुख्य पहलें लिंग समानता, स्वशासन, आजीविका व प्राकृतिक सम्पदा के प्रबन्धन से सम्बन्धित हैं।

For bringing qualitative & quantitative improvement in the lives of citizens in its outreach region SCRIA works towards transforming them from being passive recipients to initiators and managers of governance & development processes. For this purpose, SCRIA facilitates capacity building of women, men, youth & teenagers to identify & articulate their own problems, find ways to tackle them, generate - mobilize resources for initiating & implementing local initiatives. Sustainability, community's ownership, accountability and probity in initiatives' is further fortified by cost sharing, annual social audit of SCRIA's programs, participatory impact monitoring & involvement of voluntary community volunteers. In concurrence with the national policies and problems of the region SCRIA has organized its' work around key initiatives of gender equality, governance, livelihood & natural resources management known as Swavlambini, Svashaasan, Svajeevika & Sampada Prakritik respectively.

स्वावलम्बिनी Swavlambini [Self-reliant woman]

दृष्टि लिंग समानता को मुख्यधारा में लाना

लक्ष्य

- सामाजिक, राजनैतिक, आर्थिक व विकास की प्रक्रियाओं में अपने अधिकार, हक व न्याय लेने के लिये महिलाओं को सशक्तिकरण के अवसर देना
- लिंग समानता के लिये समर्थक वातावरण बनाना
- महिलाओं के मुद्दों व विचारों को समाज की मुख्यधारा में प्रोत्साहित करना

विकास के लिये पहलें

सक्रिय स्वावलम्बन महिलाओं को महिलाओं के अधिकार, हक व लिंग न्याय के लिये संवेदनशील करना

सक्रिय समानता ग्राम सभा में लिंग समानता व लिंग परिपेक्ष से सम्बन्धित मुद्दों को प्रोत्साहन

सक्रिय शक्ति लिंग व घरेलू हिंसा, आदि से त्रस्त महिलाओं की सहायता के लिये सामाजिक योद्धा

सक्रिय लिंग अंकेक्षण महिलाओं की स्थिति जानने के लिये दृष्टिकोण व व्यवहार का मानचित्रण

Vision Mainstreaming gender equality

Mission

- Empowerment opportunities to women to seek their rights, entitlement & justice in social, political, economic and developmental processes
- Facilitate an enabling environment for gender equality
- Promote mainstreaming of women's issues

Development initiatives

Sakriya Swavlamban Sensitizing women on women's rights, entitlements & gender justice

Sakriya Samaanta Promotion of issues of gender equality & gender perspective among Gram Sabha members'

Sakriya Shakti Social warrior supporting victims of gender & domestic violence, social intolerance, etc.

Sakriya Gender Audit Mapping gender attitudes & practices to ascertain the status of women in family & society

Outreach & events facilitated in 2023 - 24

- | | |
|----------------------------------|------|
| • General outreach villages | 978 |
| • Intensive outreach villages | 432 |
| • Sakriya Shakti [women leaders] | 1019 |

2023 - 24 में पहुंच व गतिविधियां

• सामान्य पहुंच के गांव	978
• सघन पहुंच के गांव	432
• सक्रिय शक्ति महिला नेत्रियां	1019
• क्षमता वर्द्धन गतिविधियां	
• कार्यशाला/प्रशिक्षण	59
• नागरिक संवाद	113
• अभियान	2
• महिला दिवस	1
• लिंग समानता दिवस	1
• लिंग हिंसा विरोध दिवस	1
• लिंग समानता सर्वे गांव	222
• शक्ति कोष राशी	₹79,012

• Capacity building activities	
- workshops/ trainings	59
- citizens' dialogues	113
- campaigns	2
- mahila diwas	1
- gender equality diwas	1
- end gender violence diwas	1
• Gender Audit villages	222
• Shakti Kosh amount	₹79,012

स्वशासन Svashaasan [Self governance]

दृष्टि सम्मिलित व जवाबदेही शासन

लक्ष्य शासन की निर्णय लेने वाली प्रक्रियाओं में महिलाओं व अन्य नागरिकों की अर्थपूर्ण भागीदारी

विकास के लिये पहलें

सक्रिय मंच गांव स्तरीय मंच गांव में विभिन्न मुद्दों पर स्थानीय पहलों के लिये

सक्रिय प्रतिनिधि पंचायती राज व्यवस्था में महिला प्रतिनिधि व अन्य शासन व विकास की प्रक्रियाओं को सम्मिलित व जवाबदेही बनाने के लिये प्रयासरत

सचेत नागरिक सामरिक महत्व के मुद्दों में नागरिकों की समझ बनाना

सक्रिय सामाजिक अंकेक्षण व जन सुनवाई ग्राम सभा द्वारा गांव में विकासात्मक पहलों, सार्वजनिक सुविधाओं और सेवाओं का आंकलन व अवलोकन को प्रोत्साहित करना

2023 - 24 में पहुंच व गतिविधियां

• सामान्य पहुंच के गांव	978
• सघन पहुंच के गांव	432
• महिला संगठन गांव में	40
• क्षमता वर्द्धन गतिविधियां	
• कार्यशाला/प्रशिक्षण	53
• नागरिक संवाद	51
• अभियान	6
• सूचना कैम्प	61
• सक्रिय मंच	432
• सक्रिय मंच सहयोगी	1405
• ग्राम स्तरीय चौपाल बैठक	1534
• ग्राम स्तरीय कमेटियां सक्रिय की	3101
• मंच द्वारा स्थानीय पहल	3545

Vision Inclusive and accountable governance

Mission Meaningful participation of women & other citizens' in decision making processes of governance

Development initiatives

Sakriya Manch An intra village platform for local initiatives on various issues

Sakriya Pratinidhi Elected women & other representatives of Panchayati Raj Institutions making governance & development inclusive & accountable

Sachet Naagrik

- Sensitizing citizens on issues of critical importance
- Gram Sabha members monitoring & reviewing the status of development initiatives, public facilities & services in their villages

Sakriya Samajik Ankeshan va Jan Sunwai Promote social audit & public hearing by Gram Sabhas of development initiatives, public programs & facilities in their respective village

Outreach & events facilitated in 2023 - 24

• General outreach villages	978
• Intensive outreach villages	432
• Sangathans' in villages	40
• Capacity building activities	
- workshops/ trainings	53
- citizens' dialogues	51
- campaigns	6
• Information Camps	61
• Sakriya Manch	432
• Sakriya Manch Sahyogi	1405
• Village level Chaupal Baithak	1534
• Village level Committees activated	3101
• Local Initiatives by Manch	3545



सम्पदा प्राकृतिक Sampada Prakritik [Natural Resources]

दृष्टि प्राकृतिक संसाधनों का प्रभावी व सतत प्रबंधन

लक्ष्य जल, मिट्टी, वनस्पति, चारा व ईंधन के प्रभावी प्रबंधन के लिये ग्राम समुदाय का सशक्तिकरण

विकास के लिये पहलें

सक्रिय जल सम्पदा बरसाती जल संग्रहण तंत्र, भूजल पुनर्भरण, उचित प्रबंधन व उपयोग

सक्रिय स्वच्छता घरों व समुदाय स्तर पर बेहतर स्वच्छता के लिये ग्राम समुदाय को संवेदनशील बनाना और उन्हें तकनीकी व आर्थिक सहायता प्रदान करना

सक्रिय कृषक किसानों व पशुपालकों के लिये शुष्क खेती के तरीके व पशुपालन प्रबंधन के गुर समझने व अपनाने का अवसर

सक्रिय सामलात सम्पदा सामलात भूमि व संसाधनों का समुदाय द्वारा सतत प्रयोग द्वारा सतत प्रबंधन

2023 – 24 में पहुंच व गतिविधियां

• सामान्य पहुंच के गांव	978
• सघन पहुंच के गांव	432
• उन्नत खेती हैक्टेयर	50
• प्राकृतिक खेती परिवार	40
• जैविक कम्पोस्ट	18
• गन्दे पानी का प्रबंधन – गांव	24

Vision Effective and sustainable natural resource management

Mission Empowerment of village communities for efficient management of water, soil, vegetation, fodder & fuel

Development initiatives

Sakriya Jal Sampada Promote rain harvesting systems, ground water recharging & prudent management

Sakriya Svachhta For improved sanitation at household & community level

Sakriya Krishak An opportunity for farmers and livestock holders to learn & adopt improved dry land agricultural practices & livestock management

Sakriya Samlaat Sampada Sustainable management & use of common lands and natural resources' assets

Outreach & events facilitated in 2023 - 24

• General outreach villages	978
• Intensive outreach villages	432
• Improved cultivation, bunding [hac.]	50
• Natural farming [families]	40
• Organic composting	18
• Waste water management [villages]	24

स्वजीविका Svajeevika [Self livelihood]

दृष्टि आर्थिक सशक्तिकरण व सम्मिलन

लक्ष्य महिलाओं व अन्यो को उद्यम व उद्यमिता के अवसर प्रदान करना

विकास के लिये पहलें

सक्रिय संचय सक्रिय संगठन के सदस्यों के लिये बचत व ऋण प्रक्रिया

सक्रिय उधमी महिलाओं के लिये सूक्ष्म उधम की पहल का अवसर

सक्रिय शिक्षा ग्रामीण युवतियों व युवकों को उच्च शिक्षा व तकनीकी प्रशिक्षण प्राप्त करने के लिये सहयोग और आमजन को आर्थिक व वित्तीय मुद्दों पर संवेदनशील करना

2023 – 24 में पहुंच व गतिविधियां

• पहुंच के गांव	40
• महिला संगठन	40
• सदस्याएँ	410
• संगठनों के पास बचत	₹39,76,000

Vision Economic empowerment and inclusion of women & others

Mission Provide opportunity to women & others for micro enterprise & entrepreneurship

Development initiatives

Sakriya Sunchay A saving & credit activity for members of Sakriya Sangathans

Sakriya Udyami An opportunity for women entrepreneurs to start micro enterprise

Sakriya Shiksha A financial opportunity for young women & men interested in attaining technical or higher education and sensitization of people on financial & economic issues

Outreach & events facilitated in 2023 - 24

• Outreach villages	40
• Sangathans	40
• Members	410
• Savings w/ groups	₹39,76,000



वांछित परिवर्तन को जानने के लिये व विकासात्मक प्रक्रियाओं से उत्पन्न प्रभावों व बदलावों पर समीक्षात्मक रूप से मंथन करने के लिये SCRIA ने अपने कार्यक्रमों के लिये सहभागी प्रभाव आकलन को नियमित वार्षिक घटक बनाया है। इसके लिये प्रभाव, सूचक, जानकारी एकत्र करने की पद्धति व विश्लेषण प्रक्रिया स्थापित की है। प्रभाव आकलन संस्था द्वारा संगठित महिला संगठनों/ मंचों के साथ मिलकर किया जाता है। पहुंच के समुदायों में SCRIA द्वारा संचालित पहलों के प्रभाव को कुछ सूचकों के साथ नीचे दर्शाया है। To monitor the ultimate desired change and for critical reflection on the effects and changes caused by development interventions SCRIA has made participatory impact monitoring a regular annual feature for its programs. For this purpose, impacts, indicators, tools for data collection and analysis have been established. Impact monitoring is done with the active involvement of women groups/ Manch facilitated by the organization. Given below are some impacts along with indicators indicating the extent to which initiatives facilitated by SCRIA have had an impact on outreach communities.

1 **Impact** Increased awareness among people on gender inequality due to visible & hidden discrimination

Indicators	2021	2023
% of villages where at least 10 women & 20 men are adopting steps for gender equality	62.86	88.19
% of villages where Panchayat took steps for promoting gender equality in village	35.17	85.41
% of villages where at least 6 local initiatives undertaken for reducing gender discrimination	23	33.33
no. of men involved per local initiative for reducing gender discrimination	16	23.80

2 **Impact** Increased efforts for checking visible and hidden violence against women

Indicators [average for per village]	2021	2023
% of villages where at least 5 local initiatives were undertaken for ending VAW/G	30.7	2.78
no. of men involved per local initiative for ending VAW/G	11.7	17
% of village schools where committees for addressing sexual harassment are activated	80.3	84
% of villages where social & institutional processes are activated for victims of VAW/G	84.56	97.22
% of villages where community & Panchayat provided support to women victims	71.8	81.24

3 **Impact** Increased participation of women in governance & development processes

Indicators	2021	2023
% of villages where 4 development committees are active with 40% women members	59.53	55.55
% of villages where 70% women PRI members are involved in village planning processes	22.9	54.46
% of villages where at least 30% women are involved in planning & implementation of development initiatives	33.9	66.66

4 **Impact** Increase in social, political and development initiatives at village level

Indicators	2021	2023
% of villages where at least 5 initiatives undertaken on socio political & development issues	60.45	68.74
% of villages where at least 4 initiatives undertaken for improving public services resources	45.1	55.55

5 **Impact** Increased awareness among people on sustainable management of natural resources

Indicators	2021	2023
% of villages involved in initiatives for sustainable revival & management of natural resources	100	97.91
% of villages where initiatives for cleanliness and waste management were undertaken	100	99.30
% of villages where committees for sustainable management of natural resources are active that have at least 30% women members	74.73	97.91

स्वयंसेवी Volunteers

SCRIA की विभिन्न पहलों में सफलता का राज है स्वयंसेवी – पहुंच के क्षेत्र से वो किशोर, युवा, महिलाएँ व पुरुष जो स्वेच्छा से अभियान, चेतनाशील कार्यक्रम, सामूहिक सिफारिश, हिंसा पीड़ित महिला को सहयोग, सामूहिक संपत्ति विकास व सामुदायिक पहलों जैसे शासन व विकास की प्रक्रियाओं को सम्मिलित व जवाबदेही और जन सेवाओं व कार्यक्रमों को प्रभावी बनाने में साझेदार होते हैं।

- नियमित योगदान देने वाले 440 स्वयंसेवी हैं, 227 महिलाएँ व 213 पुरुष
- रिपोर्ट वाले कार्य वर्ष में 267 स्वयंसेवियों ने 969 कार्य दिवस का योगदान दिया
- जिसमें 124 महिलाओं का योगदान 606 कार्य दिवस था और 143 पुरुषों का 363 कार्य दिवस
- इस योगदान को जब न्यूनतम मजदूरी से जोड़ते हैं तो इस का मूल्य ₹436,050 है! संस्थान ने 2023 – 24 में समुदाय से ₹436,050 के संसाधन जुटाए सिर्फ स्वयंसेवियों की विभिन्न गतिविधियों में संचालन की भूमिका से!
- 314 स्वयंसेवी 18 से 45 वर्ष के हैं व 126 स्वयंसेवी 46 से 60 वर्ष के हैं
- 34 स्वयंसेवी व्यावहारिक रूप से शिक्षित हैं व 406 औपचारिक रूप से शिक्षित हैं
- 52 स्वयंसेवियों का स्वरोजगार है, 248 किसान हैं, 4 नौकरी में हैं, 84 विद्यार्थी हैं व 22 बेरोजगार

A significant share of success in SCRIA's various initiatives is due to its outreach constituents, children - youth - women - men, who willingly partner as volunteers with SCRIA in community initiatives like campaigns, community sensitization & motivation, collective advocacy, support to women victims of violence, community asset development and in local initiatives for inclusiveness & accountability in governance & developmental processes and for making public services functional.

- 440 community volunteers, 227 women & 213 men, are regular in SCRIA facilitated initiatives
- In the reporting year 267 volunteers contributed 969 workdays in various initiatives
- Of this, 124 women contributed 606 workdays and 143 men contributed 363 workdays
- This year workdays' contribution of 969 days amounts to ₹436,050 when calculated as per the statutory minimum wage for unskilled work. In 2023 -24, SCRIA mobilized resources from outreach community worth ₹436,050 just through volunteers working on various community based initiatives!
- 314 of the volunteers are in the age group of 18 to 45 yrs., 126 in 46 to 60 yrs.
- 34 of the volunteers are functionally literate while 406 are formally literate
- 52 of the volunteers are self-employed, 248 farmers, 4 in service, 84 are students & 22 unemployed

SCRIA आभार के साथ 440 स्वयंसेवियों का सहयोग स्वीकार करती है जिनके निस्वार्थ योगदान के बिना लक्ष्य तक पहुंचना संभव नहीं है

SCRIA gratefully acknowledges the support of 440 community volunteers without whose selfless devotion the mission would be incomplete



स्थानीय पहल Local Initiatives

कई वर्षों से SCRIA के कार्यक्षेत्र के गांवों में स्थानीय स्तर पर प्रजातान्त्रिक व विकासात्मक प्रक्रियाओं में जवाबदेही व सम्मिलन लाने के लिये नागरिकों द्वारा कार्यवाही आम है अपवाद नहीं। जीवन को प्रभावित करने वाली सामाजिक, राजनैतिक, आर्थिक और कानूनी प्रक्रियाओं में महिलाओं की भूमिका को मुख्यधारा में लाने के लिये व नागरिकों की सक्रिय भागीदारी को प्रोत्साहित करने के लिये इस प्रकार की कार्यवाही को प्रोत्साहित करते हैं। स्थानीय पहल करते हैं चर्चा, सामुदायिक बैठकों, निर्णायकों को शिकायत, जन प्रदर्शन, रैली, प्रशासन को ज्ञापन, श्रमदान, प्रेस कान्फ्रेंस इत्यादि द्वारा। स्थानीय पहल होते हैं

- जन स्कीमों व कार्यक्रमों के प्रतिपादन और सेवाओं को प्रदान करने में सुधार के लिये
- जन कार्य, विकासात्मक व शासन की प्रक्रियाओं में जवाबदेही के लिये
- गांव स्तरीय विकासात्मक पहलों व जन सेवाओं में लिंग संवेदनशीलता और लिंग आधारित भेदभाव व हिंसा का आंकलन व समीक्षा करने के लिये

इन पहलों में SCRIA की भूमिका सीमित होती है उचित जानकारी प्रदान करने में, सम्बन्धित संस्थाओं के साथ सम्पर्क कराने में और कानून की अनुपालना को प्रोत्साहित करने में। इस रिपोर्ट के वर्ष में पहुंच के 965 गांवों में स्थानीय पहलें की गईं जिनका विवरण नीचे दिया है।

For many years now citizens' action for accountability & inclusiveness in democratic & developmental processes at local level in SCRIA's outreach villages are the norm rather than exception. This is encouraged for mainstreaming the role of women and for encouraging citizens' to actively participate in social, political, economic & legal processes affecting their lives. Local initiatives are in the form of community meetings, complaints to "decision makers", negotiations, public demonstrations, rallies for support from general public, memorandum to administration, voluntary labour, press conference and protest march for -

- improvement in delivery of public schemes, programs & services
- increased accountability in public works, development & governance processes
- negotiation for & monitoring of gender sensitivity in village level development initiatives and public services along with gender-based discrimination & violence

SCRIA's role in all this is limited to providing appropriate information, networking with appropriate bodies and in promoting respect for law in word and spirit. In the reporting year initiatives were undertaken in 965 outreach villages, the details of which are given below -

• कुल स्थानीय पहल Total local initiatives	3545
• पहलें जिनका समाधान हुआ No. of initiatives resolved	3323
• पहलें जो चालू हैं No. of initiatives ongoing	135
• पहलों के प्रकार Type of initiatives	9
• पहलों में भागीदार महिलाएँ No. of women involved in initiatives	15441
• पहलों में भागीदार पुरुष No. of men involved in initiatives	13219
• पहलों में भागीदार मंच सहयोगी No. of Manch Sahyogi involved	3668
• पहलों में भागीदार पंचायत सदस्य No. of Panchayat members involved	2071
• पहलों में भागीदार लोककर्मी No. of public officials involved	1624
• पहलों में कुल कार्य दिवस लगे No. of workdays spent	7685

परिवर्तन दूत Change makers

किसी भी स्थिति में किसी भी जगह पर कोई भी व्यक्ति परिवर्तन निर्माता, परिवर्तक हो सकता है। परिवर्तन दूत होने के लिये चाहिये केवल दृष्टि, पहल, संयम, दृढ़ता, साहस व विश्वास। रूढ़ीवादी समाज में परिवर्तन केवल कठिन ही नहीं अपितु जोखिम वाला कार्य भी होता है। हमारे कार्यक्षेत्र के लोग मुख्यतः महिलाएँ इन कठनाईयों से विचलित हुए बिना परिवर्तन ला रही हैं अनेक प्रकार की पहलों के द्वारा जैसे व्याप्त लिंग भेदभाव व हिंसा के विरुद्ध कार्यवाही करना, हिंसा पीड़िता को सहायता देना, सामाजिक राजनैतिक व विकासात्मक प्रक्रियाओं में सम्मिलन सुनिश्चित करना, लोक सेवाओं स्कीमों में जवाबदेही व प्रतिक्रियाशीलता मांगना, ज़रूरतमंद को जायज़ हक व अधिकार दिलवाना, गांव स्तरीय विकास व निगरानी समितियों को सक्रिय कर क्रियाशील करना, जन संस्थानों की अर्थपूर्ण कार्यशीलता सुनिश्चित करना ओर सार्वजनिक संसाधनों का जन प्रबन्धन प्रोत्साहित करना।

Any person can be a change maker, a transformer in any situation in any place. It only requires vision, initiative, patience, persistence, courage and faith to be a transforming agent. Change in a rigid society is not only difficult but at times a dangerous exercise. But undeterred, people, mainly women, in our outreach villages go about creating ripples of change by acting against pervasive gender discrimination & violence, providing support to women victims of violence, securing inclusiveness in social political & development processes, seeking accountability & responsiveness in public services & schemes, facilitating due benefits for needy, activating public forums like development & supervision committees, ensuring inclusiveness in local governance & development processes, working for meaningful functioning of public institutions and for public management of community assets & common resources.

License for sale of alcoholic liquor through shops or vends are given yearly & the terms clearly state the point of sale will be at least 1km away from the village and will not be in close proximity to school, place of worship or public spaces frequented by women & children. Contrary to this in many villages liquor vends are set up mid village, in close proximity to bus stand, main road of the village, public water tanks, etc. This was so in village Deepsar of Ratangarh Churu, and it was a bane for most in the village as drunk men would call out invectives to passerby, make lewd comments on women & girls, pick up fight and be a nuisance. The liquor vend contractor was asked to shift his vend to the outskirts of the village, but he refused. Bhanwari Devi, an active volunteer with SCRIA on social causes, raised the issue in Chaupal Baithak where she got an overwhelming support from fellow villagers present. Next day, she along with several women, men, teenagers confronted the contractor and gave him an ultimatum to shift the vend outside the village within 24 hours. Faced with this ultimatum the very next day contractor shifted the vend to an agreed upon place outside the village. Similarly, in village Harasar of Sujangarh Churu, Kisna Devi mobilized more than 100 people, of all ages and gender, to get the liquor vend shifted from the main thoroughfare of the village to the outskirts. In Mangleshwar village of Rewari the situation arising from a liquor vend situated in between a school & temple in the village was such that Geeta had to call the police to shut the vend down.

Joraram of village Ruplisar in Sardarshaher Churu is a changemaker who has been associated with SCRIA and regularly attends various capacity building events. In July 2023 he came to know that all is not well at the public school in the village with teachers coming late to school, midday meal is served cold etc. He raised the issue at Chaupal meeting, during the discussion it was found that the School Management Committee in the village was also inactive. Joraram and few others decided to revive the SMC and monitor the working of the school themselves. The school authorities did not appreciate the “interference” but could not do much as what Joraram and others were doing was within the framework of local governance act and policies. In August Joraram was told by a concerned parent that the head teacher Jagdish has told class 12 students that if they worked in his farm, he will ensure that all such students’ got good grades. Few students took the bait. Joraram immediately called a meeting which along with SMC members & Sarpanch was attended by Gram Sabha members. The group informed the Cluster block Elementary Education Officer who took immediate action against the erring head master and started a departmental enquiry. Currently under a new head teacher, an active SMC and vigilant village residents the school is doing well and is being counted among model schools in the district. Premdas of Khundia and Omprakash of Khiwansar in Churu too are changemakers who mobilized people to improve the working of public school in their respective villages.

In village Gurawda of Rewari a 14-year-old school girl was being continuously harassed by a man. The girl stopped going to school, after much coaxing by her mother she told the reason. The mother contacted Poonam, a Sakriya Shakti and related the problem. Poonam along with the girl's parents contacted the man's family who apologized for their son's behavior and promised that there won't be any trouble in future. After few days the man attempted to kidnap the girl but she screamed and people nearby saved the girl. Poonam after getting consent from girl's parents got a case registered against the youth under POCSO Act. People in the village tried to coax the family of victim and Poonam to forego complaint under POCSO Act but with the support of Poonam the family has stood their ground, they do not want any other girl to become a victim of the offender. Presently, the offender is in prison and the victim has once again started going to school. Sona of Tanda, Rami of Gopalpura, Manju of Loonch in Churu, Rekha of Rasuli, Mausam of Jatusana, Anita of Mundi, Urmila of Asakamajra in Rewari, Kamlesh & Bhanwari of Purkhottampur, Manti of Girdharpur in Jhajjar are among many women & men in the outreach area who helped & supported women & girls' victims of violence, promoted safe spaces for women & girls in villages and took initiatives to stop & end violence against women & girls, during the reporting months.

Being a change maker for women is not easy in a society rooted in patriarchal values. Satwanti of Gujrawaas in Jhajjar ensured the attendance of all women members of Panchayat in Gram Sabha meetings instead of male members from their families. Suman from village Giradhpur in Jhajjar took initiative to clean up the main lanes of the village after Panchayat refused citing lack of funds. Funding was crowd sourced from the village & now the residents have clean, dry and newly paved lanes. Sanna of Surwas, Anita of Udasar Chardan, Kishanlal of Girgichiya, Kishna of Harasar in Churu, Bimla Devi of village Hudera in Churu, Rekha of village Shadipur in Rewari, Savita of village Ramgarh in Rewari and many other women & men of outreach villages are actively taking steps to promote gender equality, stop gender violence, promote safe spaces for women & girls, promote inclusiveness & accountability in local governance and development, revive traditional dryland agri practices, organic farming, renovate/ revive derelict rain harvesting structures, established potable water facility, cleanup & greening of public spaces, facility for stray cattle etc. in their villages. There are several thousand women & men who are bringing about change in their & others' lives through various initiatives. Sometimes initiatives are very small benefitting a family or two and other times the effect of the initiative goes beyond few villages. But all initiatives bring about a change for the better, motivating the change makers to keep working for bringing change.

Publications

Following were published in the year for sensitization, opinion building & dissemination of information -

- Handbills in Hindi – 5 types were published on issues related to equity based gender equality, planning for village development, local governance and on leadership development among teens and youth
- Banners in Hindi – 4 types were printed on issues related local governance, village development and on gender equality
- Posters in Hindi – 1 on Gram Panchayat village development program
- Booklets in Hindi – 5 types on issues of local governance, village development and on gender equality
- SCRIA's annual report for 2022 - 2023
- Audio Messages in Haryanvi & Marwari on issues related to local governance, village development and on gender equality
- Wall writing – Slogans promoting gender equality and on ending violence against women & girls

Supportive Services

At SCRIA the two main supportive services, accounts & administration, constantly endeavour to provide proficient service ensuring transparency and accountability in their work. Finance management takes into account the accepted national - international standards of accounts & finance management, the upkeep of inventory, stock & assets. It rigorously follows digital payments and cash payments are nearly negligible now. Furthermore, in the reporting year SCRIA continued in its pursuit of making its campuses green. SCRIA, for its use now generates 22.0 kwp of solar power daily, harvests 4,54,500 litres of rainwater annually, composts 40,500 kilogram of bio waste, nurtures 1,512 trees & plants of 72 different varieties, runs an ecological farm in 1.5 acres and manages livestock for chemical free milk & milk products. SCRIA has an internal complaints' committee ICC, against sexual harassment at workplace as per the Act, and its headed by Ms. Rekha.

Balance Sheet as on 31st March, 2024

LIABILITIES	Schedule	AMOUNT	ASSETS	Schedule	AMOUNT
Capital Fund		94,66,783.49	Fixed Assets	A	94,66,783.49
Corpus Fund	C	3,45,59,163.00	Investment – Scheduled Bank FDRs		3,40,44,000.00
Staff Social Security Fund		8,63,246.94	Loans & Advances	D	5,39,222.00
Payables		4,90,178.00	Security		7,053.00
Committed Grant Fund	B	71,946.11	Receivables		26,946.00
			T.D.S. Refundable A.Y 2010-11		5,380.00
			T.D.S. Refundable A.Y 2023-24		1,75,216.00
			T.D.S. Refundable A.Y 2024-25		1,71,874.00
			Cash & Bank Balance		9,19,109.18
			Cash in Hand		46,439.00
			Cash at Bank		<u>8,72,670.18</u>
			Income & Expenditure A/c		
			Opening Balance as on 01.04.2023		74,225.49
			Add: Excess of Expenditure over Income during the year		<u>21,508.38</u>
					95,733.87
TOTAL		4,54,51,317.54			4,54,51,317.54

Signed as per our separate audit report of even date
attached herewith

M/SPANKAJ MAN SINGH & CO.
Chartered Accountants
FRN:016118N

Executive Director

Sunil
Team Leader Accounts
Place: Khorl
Date : 10.08.2024
UDIN:
24096728BKHNUG8123



Pankaj Sharma

Pankaj Sharma, FCA, DISA (ICAI)
Partner, Membership No. 096728



Income & Expenditure Account

for the year ended on March 31st, 2024

Expenditure	Schedule	Amount	Income	Schedule	Amount
Expenditure met from Purpose Specific Grant Fund – Foreign Source	B	44,91,248.84	Purpose Specific Grant Fund - Foreign Source	B	44,91,248.84
Expenditure met from Purpose Specific Grant Fund– Government Source	-	-	Opening Committed Balance 01.04.2023		56,506.45
Expenditure met from Purpose Specific Grant Fund– CSR Source	-	-	Add: Received during the year		44,95,012.50
Expenditure met from Interest & other Income Source	B - I	31,68,249.78	Add: Bank Interest received during the year		11,676.00
Grant fund over spent	B	3,830.00	Less: Grant Fund Committed Balance as on 31.03.2024		<u>71,946.11</u>
			Purpose Specific Grant Fund – Government Source		-
			Purpose Specific Grant Fund – CSR Source		-
			Income from Interest & other Source	B – I	31,50,571.40
			Excess of Expenditure over Income		21,508.38
TOTAL		76,63,328.62			76,63,328.62

Sunil
 Team Leader Accounts
 Place: Khorl
 Date : 10.08.2024
 UDIN:
 24096728BKHNUG8123

Signed as per our separate audit report of even date attached herewith
 M/S PANKAJ MAN SINGH & CO
 Chartered Accountants FRN:016118N

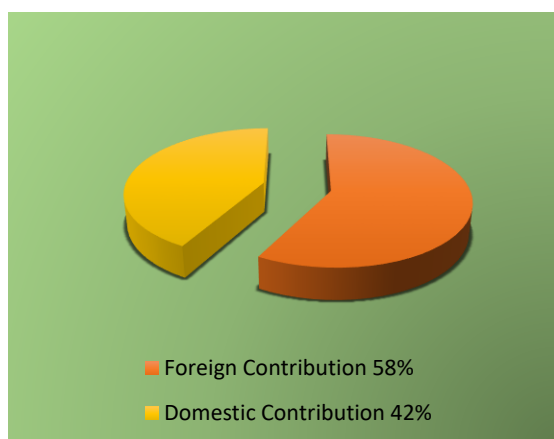


Pankaj Sharma
 Pankaj Sharma, FCA, DISA (ICAI)
 Partner, Membership No. 096728

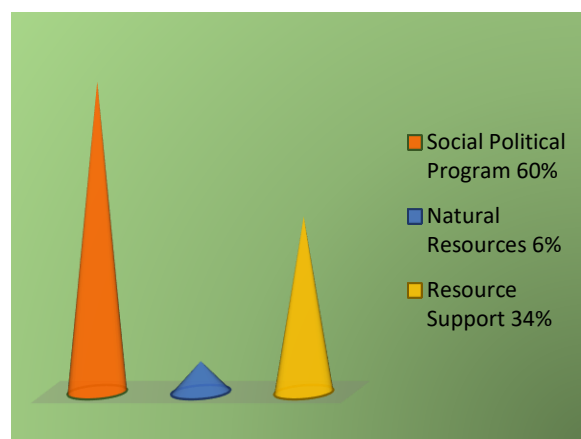
Executive Director



Resources Summary



Resources during 2023 - 24



Resource utilization in 2023 - 24

The Organization

Social Centre for Rural Initiative and

Advancement [SCRIA] www.scria.org

Email scriakhori@yahoo.co.in

Registration Act

Indian Societies Registration Act of 1860/ Haryana
Registration, Regulation of Societies Act 2012

Date of Registration 31. 07. 1992 – 11.04.2017

Registration No. 618 - 00975

Foundation Year June, 1979

Chief Functionary Sunder Lal, Executive Director

Operational Area Haryana & Rajasthan

Headquarter Khori 123101, District Rewari, Haryana

Main office Rajasthan Derajsar 331022, Ratangarh,
District Churu, Rajasthan

Funding Sources Govt. of India, State Government,
National & International Development Institutions, CSR
from Corporates and Local Contributions

SCRIA's Team

Executive Director Sunder Lal

Team Leader Programs Bajrang Manda

Team Leader Accounts Sunil Kumar

Program Team Mohinder, Jaiparkash, Prem, Suman,
Rekha, Ramu Ram, Manisha, Lalita

Administration Team Phep, Ramkaran, Manoj, Laxmi,
Narender, Krishan, Parmeshwari, Usha

Support of more than 440 community volunteers
during the year

Partners

★Volunteers in 1410 villages ★Asahi India ★Australian
High Commission ★British High Commission ★Canadian
High Commission ★Canadian Hunger Foundation
★CAPART ★Canadian International Development
Agency ★Department of Science & Technology
★District Rural Development Agency ★CTM - Italy
★Embassy of Federal Republic of Germany ★Embassy
of Japan ★Embassy of Sweden ★European Union
★Friedrich Ebert Stiftung ★GTZ ★Habitat for Humanity
International ★Helpage ★Indian Council for Agricultural
Research ★Indo Global Social Service Society
★Industrial Development Bank of India ★Ministry of
Environment & Forest ★MAHOU Foundation – Spain
★Ministry of Non Conventional Energy Sources
★Ministry of Panchayati Raj ★Ministry of Rural
Development ★Misereor ★NABARD ★One Village -
U.K. ★Oxfam - U.K. ★Rachna Club – Japan ★Rashtriya
Mahila Kosh ★Rotary India Water Conservation Trust
★Royal Norwegian Embassy
★SIDBI ★Solidar' Monde ★Swedish International
Development Agency ★UNDP ★Welthungerhilfe
★Youthreach

General Body Members

Ms. Bimla Devi, President – Village & P.O. Bas Duda,
District Rewari, Haryana

Ms. Kailash Bai, Vice President – Village Kosli
123302, District Rewari, Haryana

Mr. Ram Chander Punia, Treasurer – 12 MC Colony,
Charkhi Dadri, District Charkhi Dadri, Haryana

Prof. Ranbir Singh Yadav, Secretary – H. No.120,
Sector 3, Rewari 123401, Haryana

Ms. Rekha, Associate Secretary – Village Rasuli
123401, District Rewari, Haryana

Ms. Lalita Yadav, Member –Village Gagadwas, P.O.
Bawania, District Mahendergarh, Haryana

Ms. Kusum Lata, Member – Village Kalaka, P.O.
Gurdas Majara, District Rewari, Haryana

Dr. Jyotsna Chatterji, Member – Apartment 201, Block
44, Heritage City, M.G. Road, Gurgaon - 122002,
Haryana

Mr. Narendra Singh Rao, Member – D 26, Suncity
Sector 7, Rewari 123401, Haryana

Mr. Romesh Bhattacharji, Member – D 1008, New
Friends Colony, New Delhi 110065

Mr. Jagjit Singh, Member – Krishna Nagar, Col. Maha
Singh Chowk, Rewari, Haryana

Governing Body Members

Ms. Bimla Devi, President – Village & P.O. Bas Duda,
District Rewari, Haryana

Ms. Kailash Bai, Vice President – Village Kosli
123302, District Rewari, Haryana

Mr. Ram Chander Punia, Treasurer – 12 MC Colony,
Charkhi Dadri, District Charkhi Dadri, Haryana

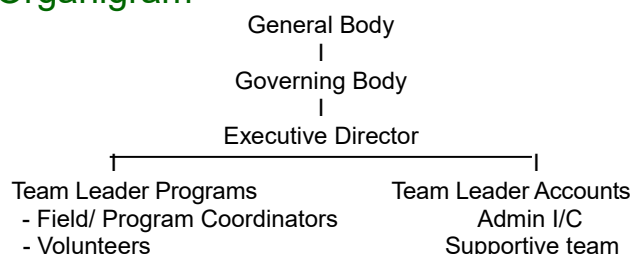
Prof. Ranbir Singh Yadav, Secretary – H. No.120,
Sector 3, Rewari 123401, Haryana

Ms. Rekha, Associate Secretary – Village Rasuli
123401, District Rewari, Haryana

Dr. Jyotsna Chatterji, Member – Apartment 201, Block
44, Heritage City, M.G. Road, Gurgaon - 122002,
Haryana

Ms. Lalita Yadav, Member –Village Gagadwas, P.O.
Bawania, District Mahendergarh, Haryana

Organigram



SCRIA Actively Concentrates on

- mainstreaming gender equality & promoting gender perspective
- sensitizing on women's rights, entitlements & gender justice
- promoting a culture intolerant of gender violence
- organizing women for a meaningful partnership in development through political empowerment and participation in governance processes
- social empowerment of women & Gram Sabha members for social justice & local initiatives
- demystification & dissemination of information related to various issues, laws, legal processes & procedures and public schemes
- promotion of livelihood activities among low & marginal income families
- engaging teens & youth on social challenges
- rain harvesting, prudent water usage and ground water recharging
- soil conservation, vegetation promotion
- sustainable & organic dry land agricultural practices and livestock management
- environmental sanitation at household and community level



SOCIAL CENTRE FOR RURAL INITIATIVE & ADVANCEMENT

Head Quarter - Khorī 123101, District Rewari, Haryana, India

Main Office Rajasthan – Derajsar 331022, Ratangarh, District Churu, Rajasthan, India

<http://www.scria.org> Email – scriakhori@yahoo.co.in